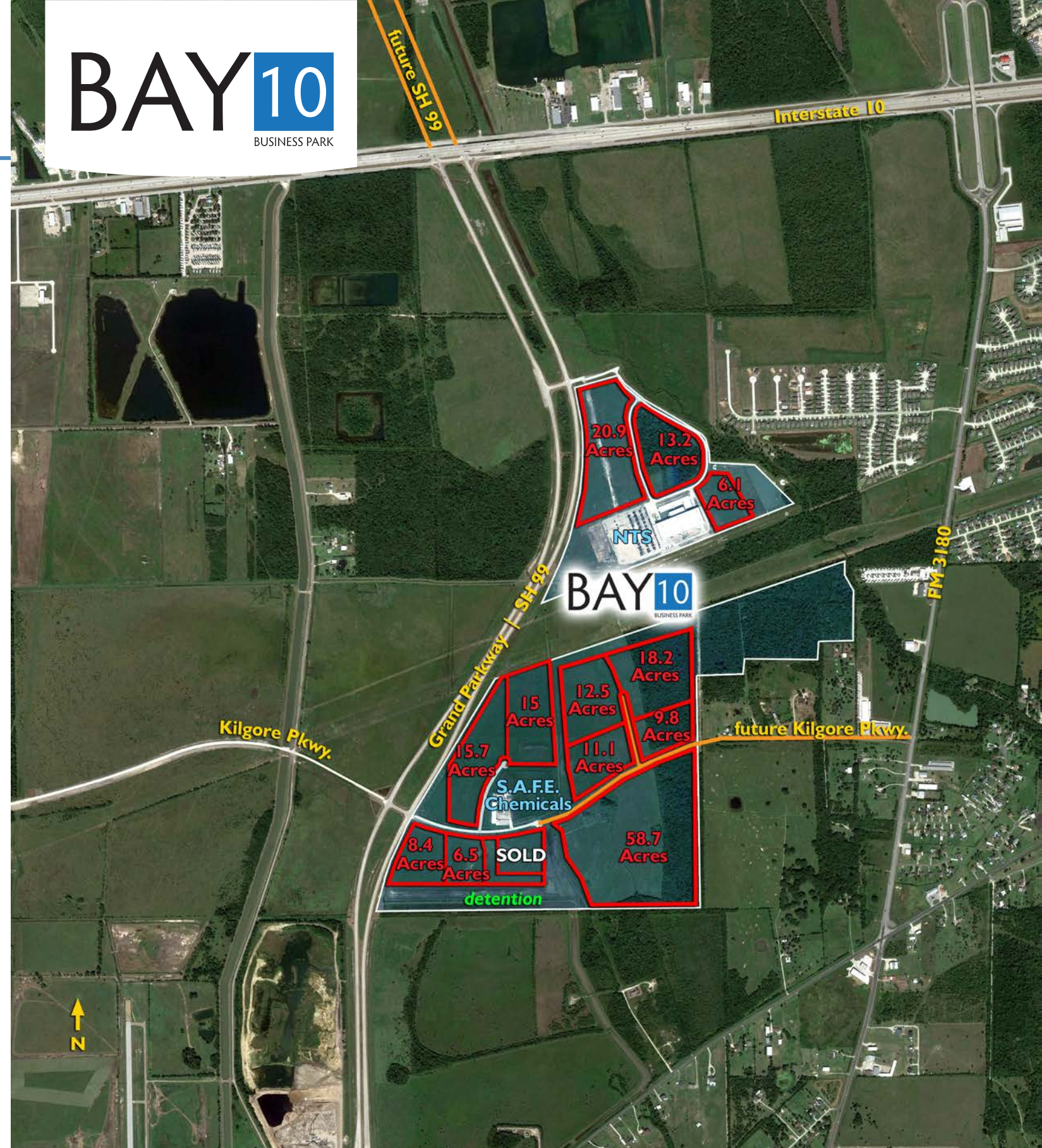
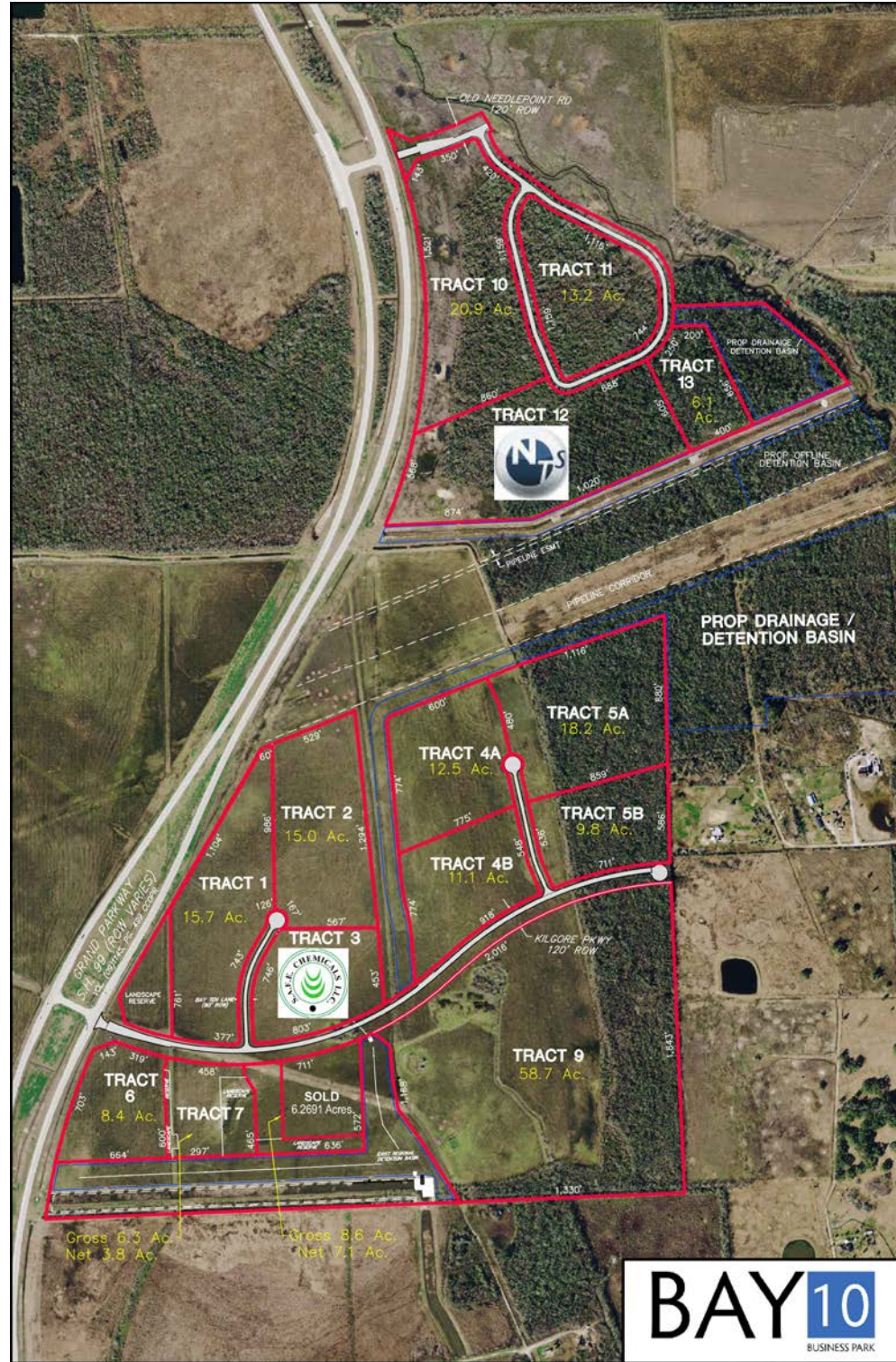


**BAY 10 BUSINESS PARK**  
Chambers County, TX

BAY 10  
BUSINESS PARK

**BAY 10**  
BUSINESS PARK



For more information, please contact:

- B. KELLEY PARKER, III, SIOR (713) 963 2896 [kelley.parker@cushwake.com](mailto:kelley.parker@cushwake.com)
- JOHN F. LITTMAN, SIOR, MAI (713) 963 2862 [john.littman@cushwake.com](mailto:john.littman@cushwake.com)
- COE PARKER (713) 963 2825 [coe.parker@cushwake.com](mailto:coe.parker@cushwake.com)
- TIM M. THOMAS (713) 963 2837 [tim.thomas@cushwake.com](mailto:tim.thomas@cushwake.com)

CUSHMAN & WAKEFIELD OF TEXAS, INC.  
1330 Post Oak Boulevard | Suite 2700  
Houston, TX 77056  
[www.cushmanwakefield.com](http://www.cushmanwakefield.com)



The depiction in the included photograph of any person, entity, sign, logo or property, other than Cushman & Wakefield's (C&W) client and the property offered by C&W, is incidental only, and is not intended to connote any affiliation, connection, association, sponsorship or approval by or between that which is incidentally depicted and C&W or its client. This listing shall not be deemed an offer to lease, sublease or sell such property; and, in the event of any transaction for such property, no commission shall be earned by or payable to any cooperating broker except if otherwise provided pursuant to the express terms, rates and conditions of C&W's agreement with its principal, if, as and when such commission (if any) is actually received from such principal. (A copy of the rates and conditions referred to above with respect to this property is available upon request.)

The depiction in the included photograph of any person, entity, sign, logo or property, other than Cushman & Wakefield's (C&W) client and the property offered by C&W, is incidental only, and is not intended to connote any affiliation, connection, association, sponsorship or approval by or between that which is incidentally depicted and C&W or its client. This listing shall not be deemed an offer to lease, sublease or sell such property; and, in the event of any transaction for such property, no commission shall be earned by or payable to any cooperating broker except if otherwise provided pursuant to the express terms, rates and conditions of C&W's agreement with its principal, if, as and when such commission (if any) is actually received from such principal. (A copy of the rates and conditions referred to above with respect to this property is available upon request.)

# BAY 10 BUSINESS PARK

Chambers County, TX

- **Master-planned business park**
- ±200 acres available
- City of Baytown water
- Aerobic sewer (by buyer)
- Will consider subdivision of sites
- Located on the east side of Grand Parkway (SH 99), 0.4 miles south of I-10 East
- Kilgore Parkway now completed west of SH 146
- Close proximity to the Port of Houston and Mont Belvieu
- Build-to-suit opportunities available
- Numerous pipeline accesses
- Not in 100-year floodplain
- Sale price: \$2.25/sq. ft.
- Key Map 463V

For more information, please visit  
[www.bay10.com](http://www.bay10.com)

B. KELLEY PARKER, III, SIOR  
(713) 963 2896  
[kelley.parker@cushwake.com](mailto:kelley.parker@cushwake.com)

JOHN F. LITTMAN, SIOR, MAI  
(713) 963 2862  
[john.littman@cushwake.com](mailto:john.littman@cushwake.com)

COE PARKER  
(713) 963 2825  
[coe.parker@cushwake.com](mailto:coe.parker@cushwake.com)

TIM M. THOMAS  
(713) 963 2837  
[tim.thomas@cushwake.com](mailto:tim.thomas@cushwake.com)

