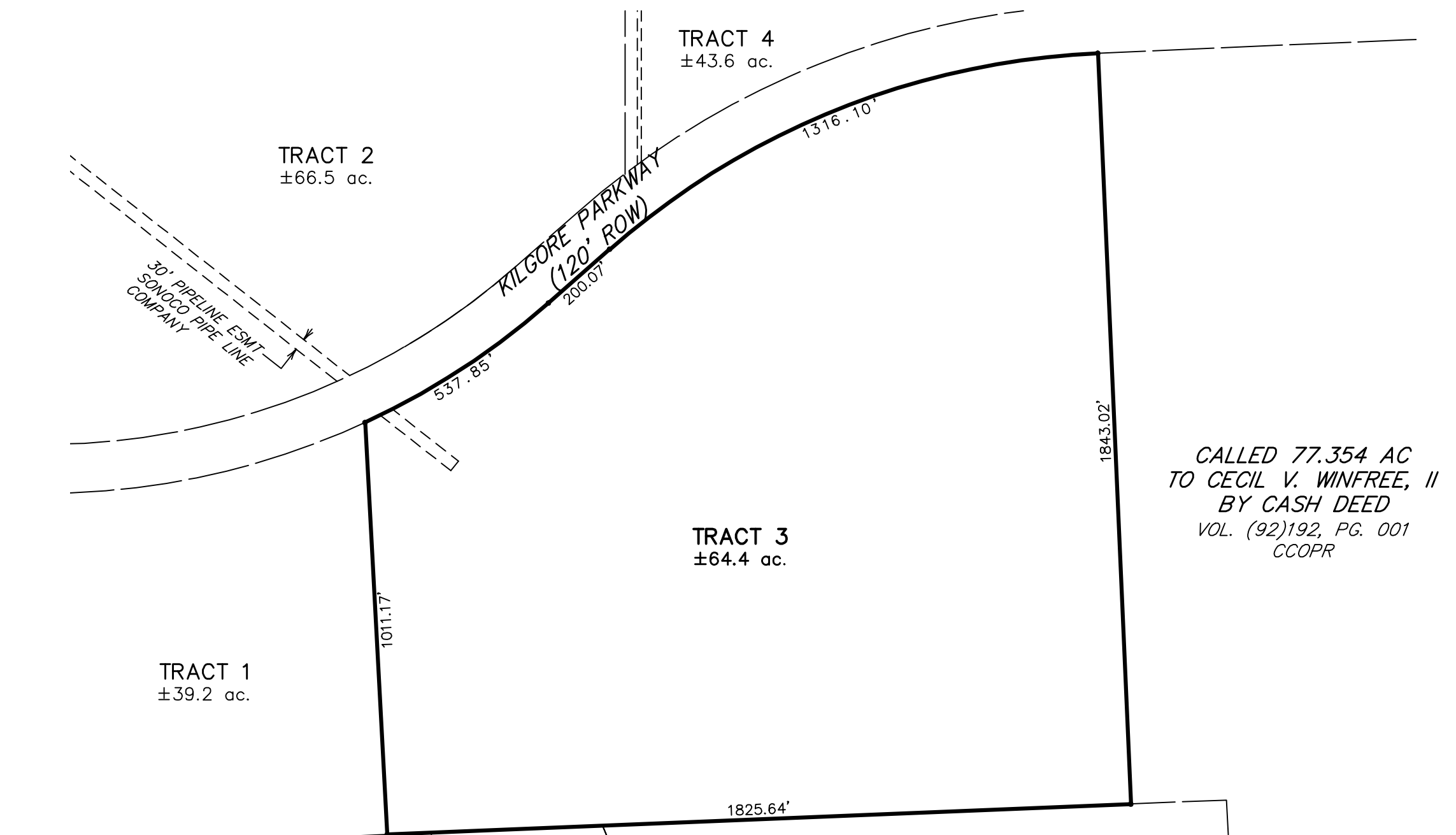


NORTH
SCALE: 1" = 300'



*CALLED 77.354 AC
TO CECIL V. WINFREE, II
BY CASH DEED
VOL. (92)192, PG. 001
CCOPR*

*CALLLED 171.926 ACRES
SOWELL LAND
PARTNERS-GRAND, L.P.
GENERAL WARRANTY DEED
WITH w/VENDOR'S LIEN
VOL. (07)953, PG. 023 CCOPR*

*REMAINDER OF A
CALLLED 179.718 ACRES TRACT A,
POWER OF ATTORNEY
VOL. (00)447, PG. 642 CCOPR*

*CALLLED 26.554 AC
EXHIBIT "C"
BY POWER OF ATTORNEY
VOL. (00)447, PG. 642
CCOPR*

*CALLLED 36.64 AC
TO ERIC AND BARBARA WALLACE
BY GENERAL WARRANTY DEED
VOL. (03)665, PG. 451
CCOPR*

DISCLAIMER:
THIS MAP WAS PREPARED WITHOUT THE BENEFIT OF A TITLE REPORT, AND IS INTENDED FOR GENERAL PLANNING AND INFORMATIONAL PURPOSES ONLY. JONES & CARTER, Inc. HAS MADE NO INDEPENDENT SEARCH, EXAMINATION, OR ATTEMPT TO ABSTRACT THIS AREA AS TO MATTERS OF RECORD. JONES & CARTER, Inc. DOES NOT UNDERTAKE TO IMPLY OR EXPRESS ANY GUARANTEE OR OPINION AS TO THE COMPLETENESS, VALIDITY, OR EFFECT OF ANY OF THE INFORMATION SHOWN HEREON. THIS MAP IS SUBJECT TO FURTHER UPDATE AND REVISION. ALL INDICATED LAND USES ARE SUBJECT TO CHANGE BY THE DEVELOPER AND SHOULD NOT BE RELIED UPON AS ACCURATE BY POTENTIAL PURCHASERS.

**PRELIMINARY LAYOUTS
FOR
BAY TEN BUSINESS PARK
TRACT THREE**
JC JONES & CARTER, Inc.
ENGINEERS • PLANNERS • SURVEYORS
Texas Board of Professional Engineers Registration No. F-439
6335 Gulton Dr., Suite 100 Houston, Texas 77061 (713) 777-5337